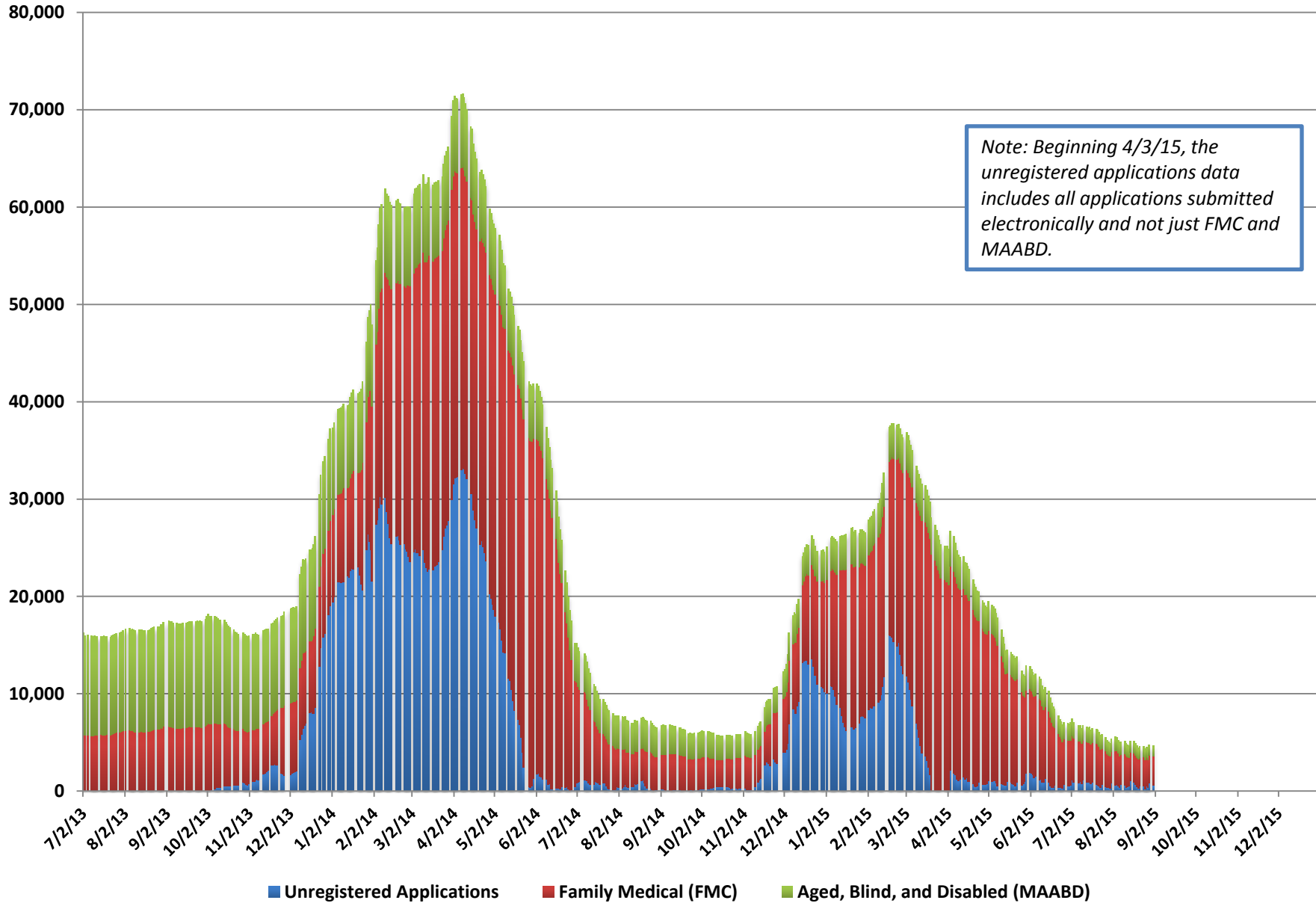


Medicaid Chart Pack

September 2015

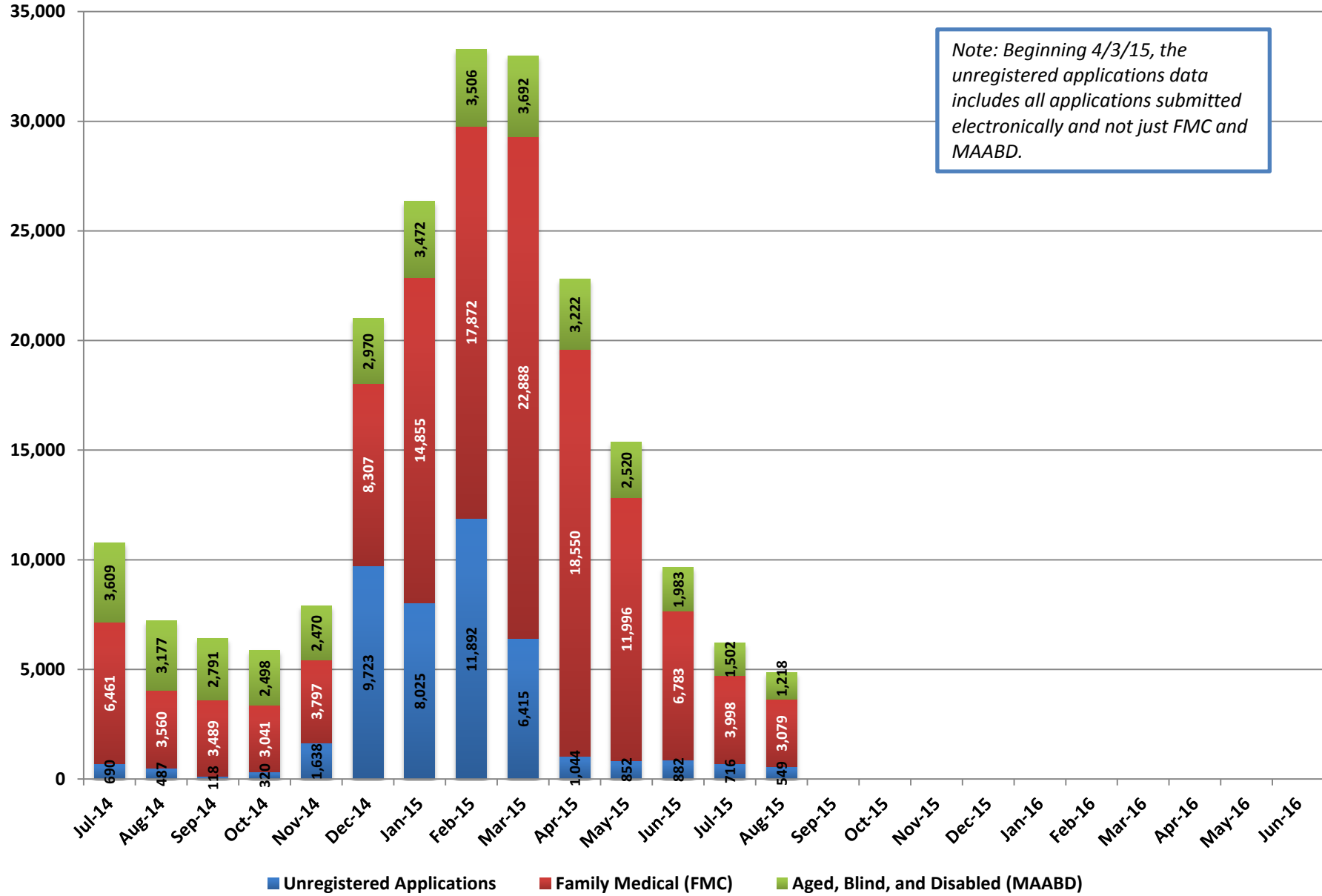
Pending Applications



Pending Applications

Date	Unregistered Applications	Family Medical (FMC)			Aged, Blind, and Disabled (MAABD)				Total Medicaid Pending Applications
		Pending <= 45 Days	Pending > 45 Days	Total Applications	Pending <= 45 Days	Pending 46-90 Days	Pending > 90 Days	Total Applications	
8/3/15	574	3,404	117	3,521	1,021	201	248	1,470	5,565
8/4/15	671	3,324	112	3,436	969	182	243	1,394	5,501
8/5/15	524	3,240	98	3,338	954	170	235	1,359	5,221
8/6/15	374	3,107	88	3,195	954	158	232	1,344	4,913
8/7/15	639	3,055	84	3,139	917	158	226	1,301	5,079
8/10/15	597	3,167	81	3,248	913	159	226	1,298	5,143
8/11/15	371	3,194	68	3,262	894	147	220	1,261	4,894
8/12/15	450	3,003	61	3,064	893	142	213	1,248	4,762
8/13/15	482	2,891	60	2,951	873	133	213	1,219	4,652
8/14/15	1,031	2,869	49	2,918	865	136	212	1,213	5,162
8/17/15	920	2,942	60	3,002	823	173	195	1,191	5,113
8/18/15	693	2,948	48	2,996	828	158	194	1,180	4,869
8/19/15	478	2,934	48	2,982	854	152	184	1,190	4,650
8/20/15	278	2,954	38	2,992	830	145	174	1,149	4,419
8/21/15	487	2,916	32	2,948	814	147	167	1,128	4,563
8/24/15	480	2,979	39	3,018	804	159	163	1,126	4,624
8/25/15	235	2,974	32	3,006	805	151	169	1,125	4,366
8/26/15	502	2,898	25	2,923	810	139	164	1,113	4,538
8/27/15	330	2,860	24	2,884	787	137	165	1,089	4,303
8/28/15	815	2,841	27	2,868	775	132	168	1,075	4,758
8/31/15	601	2,942	33	2,975	788	133	176	1,097	4,673

Pending Applications (Monthly Average)



Pending Applications - Monthly Average

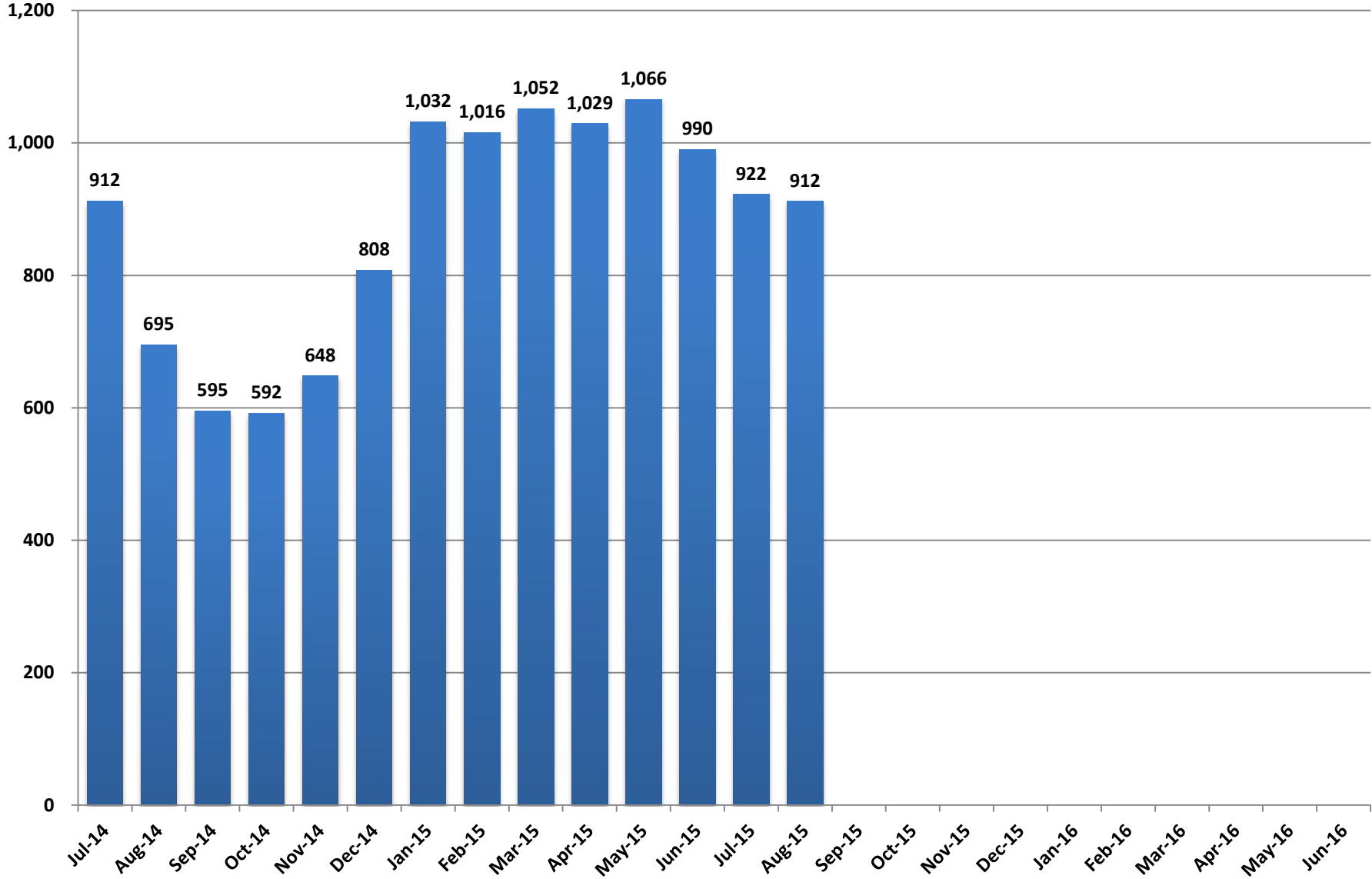
Month	Unregistered Applications	Family Medical (FMC)			Aged, Blind, and Disabled (MAABD)				Total Medicaid Pending Applications
		Pending <= 45 Days	Pending > 45 Days	Total Applications	Pending <= 45 Days	Pending 46-90 Days	Pending > 90 Days	Total Applications	
Jul-14	690	3,449	3,012	6,461	1,096	344	2,169	3,609	10,760
Aug-14	487	2,772	788	3,560	1,139	315	1,724	3,177	7,224
Sep-14	118	2,836	654	3,489	1,056	315	1,420	2,791	6,399
Oct-14	320	2,717	323	3,041	1,000	258	1,239	2,498	5,858
Nov-14	1,638	3,528	269	3,797	1,091	247	1,132	2,470	7,905
Dec-14	9,723	7,947	360	8,307	1,636	288	1,046	2,970	20,999
Jan-15	8,025	11,957	2,898	14,855	1,884	622	966	3,472	26,352
Feb-15	11,892	11,060	6,812	17,872	1,673	939	894	3,506	33,270
Mar-15	6,415	14,906	7,982	22,888	1,931	878	883	3,692	30,662
Apr-15	1,044	8,390	10,160	18,550	1,487	944	792	3,222	22,721
May-15	852	6,932	5,064	11,996	1,314	514	692	2,520	15,369
Jun-15	882	5,175	1,608	6,783	1,119	313	551	1,983	9,648
Jul-15	716	3,692	307	3,998	1,013	214	275	1,502	6,216
Aug-15	549	3,021	58	3,079	865	153	199	1,218	4,846
Sep-15									
Oct-15									
Nov-15									
Dec-15									
Jan-16									
Feb-16									
Mar-16									
Apr-16									
May-16									
Jun-16									

Note: Beginning 4/3/15, the unregistered applications data includes all applications submitted electronically and not just FMC and MAABD.

Fiscal Year Averages

Fiscal Year	Unregistered Applications	Family Medical (FMC)			Aged, Blind, and Disabled (MAABD)				Total Medicaid Pending Applications
		Pending <= 45 Days	Pending > 45 Days	Total Applications	Pending <= 45 Days	Pending 46-90 Days	Pending > 90 Days	Total Applications	
FY14	13,681	7,925	8,462	16,387	2,094	1,197	5,355	8,646	35,324
FY15	3,376	6,810	3,357	10,167	1,369	498	1,129	2,997	16,405
FY16 to date	633	3,356	182	3,539	939	184	237	1,360	5,531

Medicaid Applications Processed per Working Day



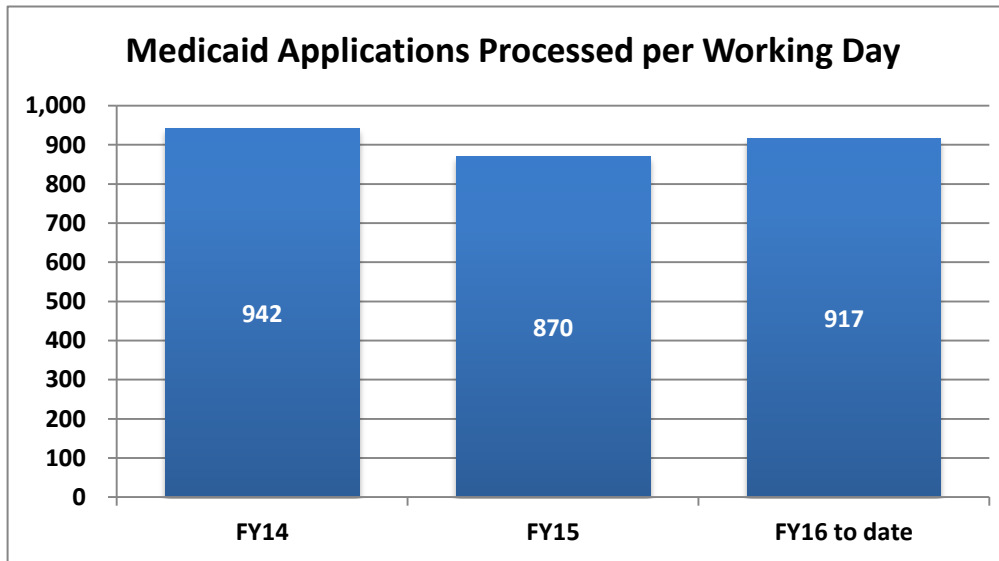
■ Medicaid Applications Processed per Working Day

Medicaid Applications Processed Per Working Day

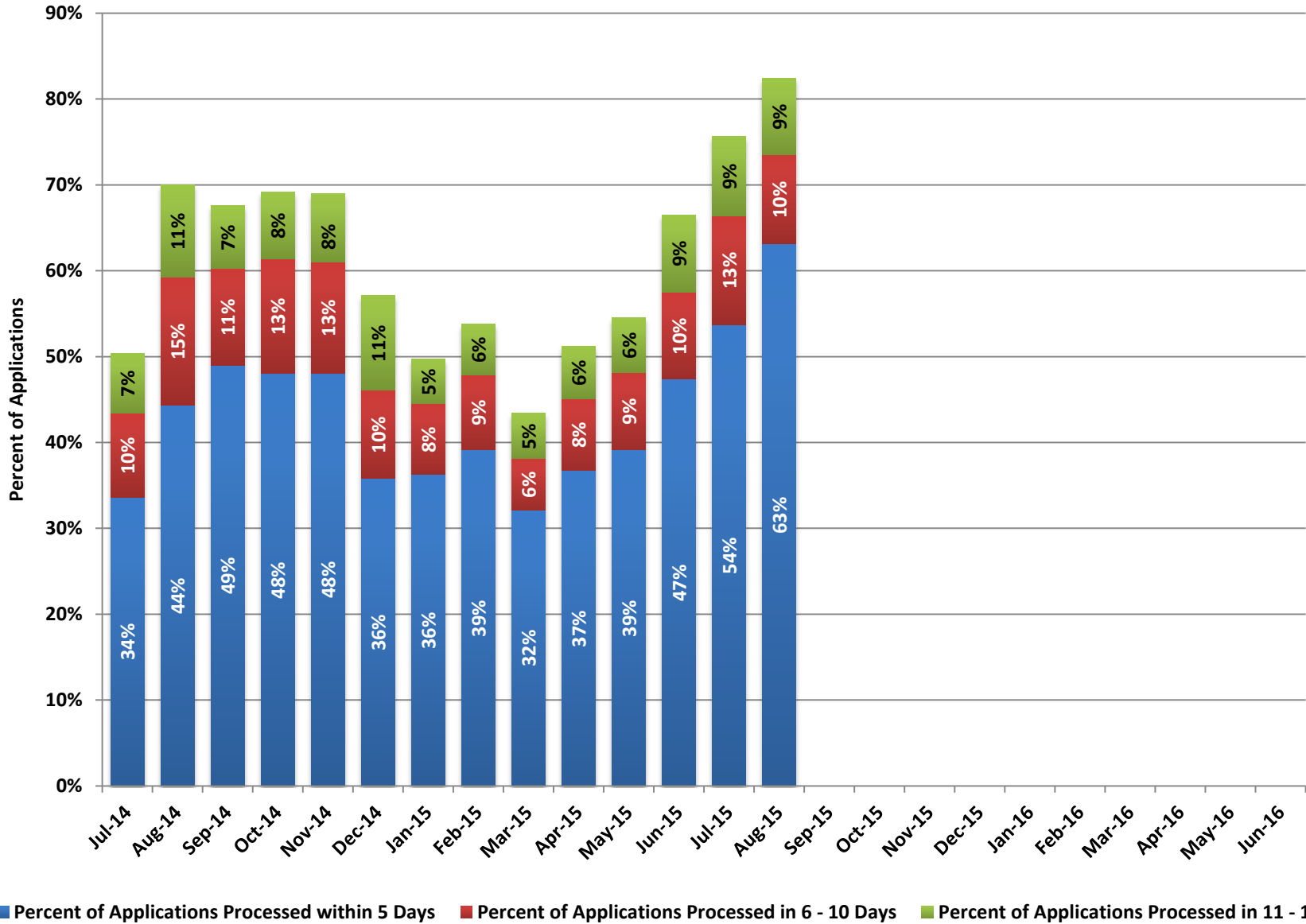
Month	Medicaid Applications Processed per Working Day
Jul-14	912
Aug-14	695
Sep-14	595
Oct-14	592
Nov-14	648
Dec-14	808
Jan-15	1,032
Feb-15	1,016
Mar-15	1,052
Apr-15	1,029
May-15	1,066
Jun-15	990
Jul-15	922
Aug-15	912
Sep-15	
Oct-15	
Nov-15	
Dec-15	
Jan-16	
Feb-16	
Mar-16	
Apr-16	
May-16	
Jun-16	

Fiscal Year Averages

Fiscal Year	Medicaid Applications Processed per Working Day
FY14	942
FY15	870
FY16 to date	917



Applications Processed within 15 Days



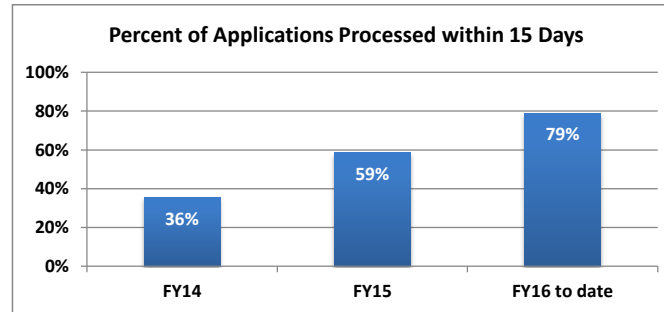
Applications Processed within 15 Days

Month	Applications Processed within 5 Days	Percent of Applications Processed within 5 Days	Applications Processed in 6 - 10 Days	Percent of Applications Processed in 6 - 10 Days	Applications Processed in 11 - 15 Days	Percent of Applications Processed in 11 - 15 Days	Applications Processed within 15 Days	Total Applications Processed	Percent of Applications Processed within 15 Days
Jul-14	6,748	34%	1,958	10%	1,404	7%	10,110	20,070	50%
Aug-14	6,471	44%	2,172	15%	1,570	11%	10,213	14,590	70%
Sep-14	6,130	49%	1,404	11%	918	7%	8,452	12,507	68%
Oct-14	6,252	48%	1,740	13%	1,016	8%	9,008	13,019	69%
Nov-14	5,296	48%	1,423	13%	878	8%	7,597	11,015	69%
Dec-14	6,372	36%	1,821	10%	1,964	11%	10,157	17,785	57%
Jan-15	7,486	36%	1,702	8%	1,068	5%	10,256	20,642	50%
Feb-15	7,514	39%	1,685	9%	1,126	6%	10,325	19,202	54%
Mar-15	7,510	32%	1,402	6%	1,225	5%	10,137	23,366	43%
Apr-15	8,415	37%	1,922	8%	1,401	6%	11,738	22,922	51%
May-15	8,339	39%	1,927	9%	1,357	6%	11,623	21,311	55%
Jun-15	10,318	47%	2,209	10%	1,959	9%	14,486	21,780	67%
Jul-15	10,895	54%	2,579	13%	1,878	9%	15,352	20,289	76%
Aug-15	12,090	63%	1,978	10%	1,716	9%	15,784	19,146	82%
Sep-15									
Oct-15									
Nov-15									
Dec-15									
Jan-16									
Feb-16									
Mar-16									
Apr-16									
May-16									
Jun-16									

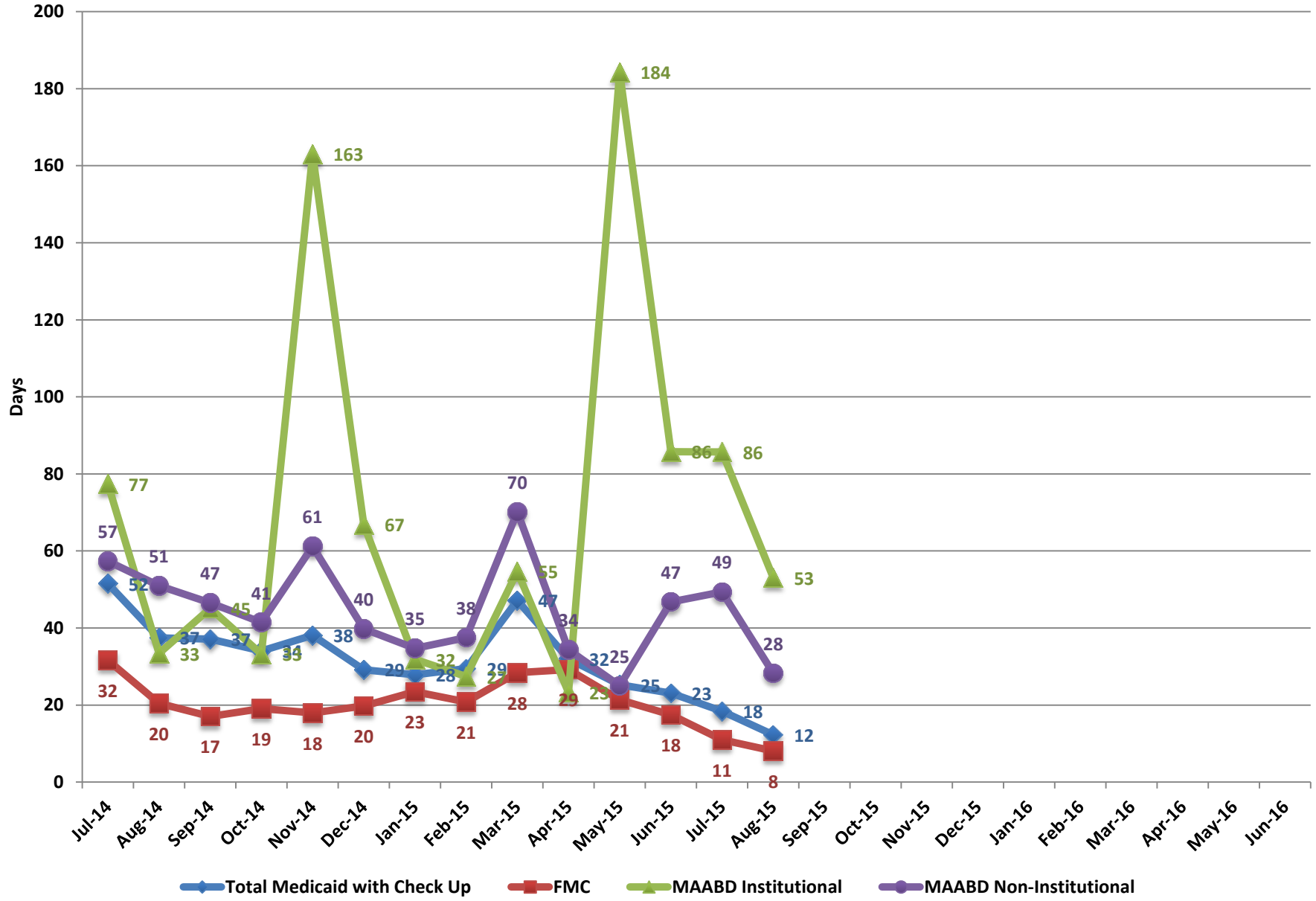
Note: Beginning with October 2013, this data reflects Family Medical (FMC), Newly Eligible Adults, Aged, Blind and Disabled (MAABD), and Nevada Check Up applications. Nevada Check Up applications were not included prior to October 2013. "One and done" applications, which are processed within a single day, started being included in this data in December 2013.

Percent of Applications Processed within 15 Days - Fiscal Year Average

Fiscal Year	% within 15 Days
FY14	36%
FY15	59%
FY16 to date	79%



Average Processing Time (Days)

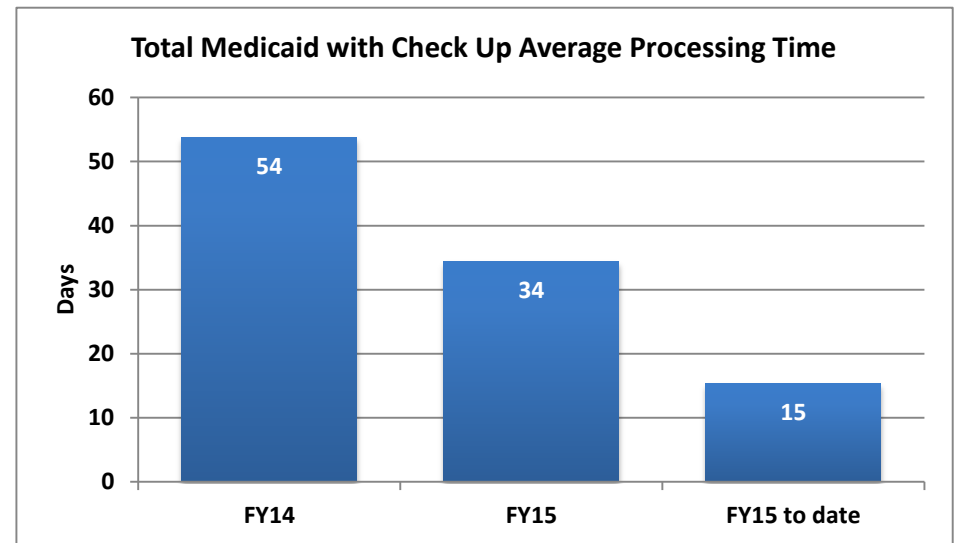


Average Processing Time (Days)

Month	Total Medicaid with Check Up	FMC	MAABD Institutional	MAABD Non-Institutional
Jul-14	52	32	77	57
Aug-14	37	20	33	51
Sep-14	37	17	45	47
Oct-14	34	19	33	41
Nov-14	38	18	163	61
Dec-14	29	20	67	40
Jan-15	28	23	32	35
Feb-15	29	21	27	38
Mar-15	47	28	55	70
Apr-15	32	29	23	34
May-15	25	21	184	25
Jun-15	23	18	86	47
Jul-15	18	11	86	49
Aug-15	12	8	53	28
Sep-15				
Oct-15				
Nov-15				
Dec-15				
Jan-16				
Feb-16				
Mar-16				
Apr-16				
May-16				
Jun-16				

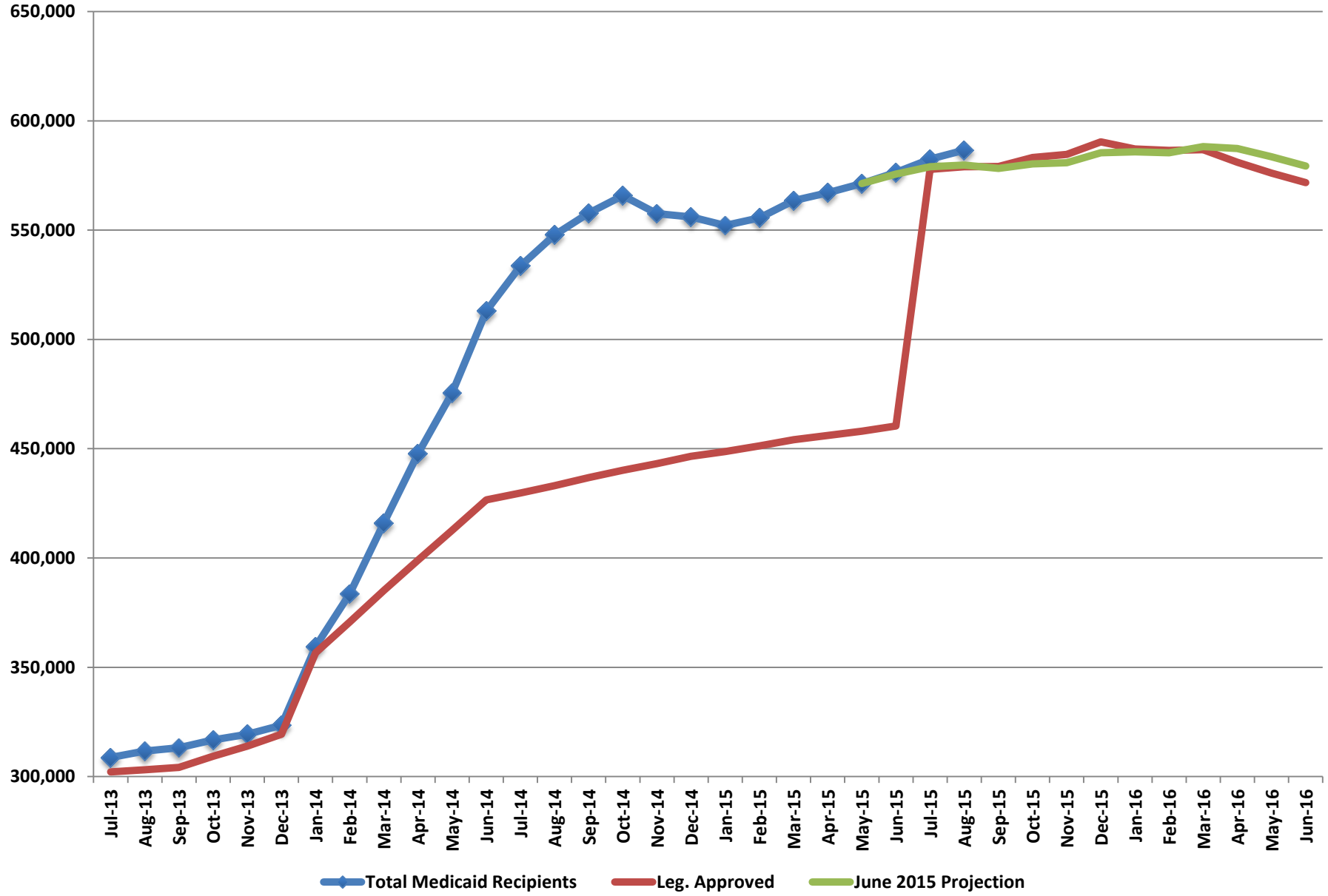
Fiscal Year Averages

Fiscal Year	Total Medicaid with Check Up	FMC	MAABD Institutional	MAABD Non-Institutional
FY14	54			
FY15	34	22	69	45
FY15 to date	15	10	69	39



Note: A few aid codes with average processing days in excess of 100 days drove up the MAABD Institutional average processing time in November 2014 and May 2015.

Total Medicaid Recipients

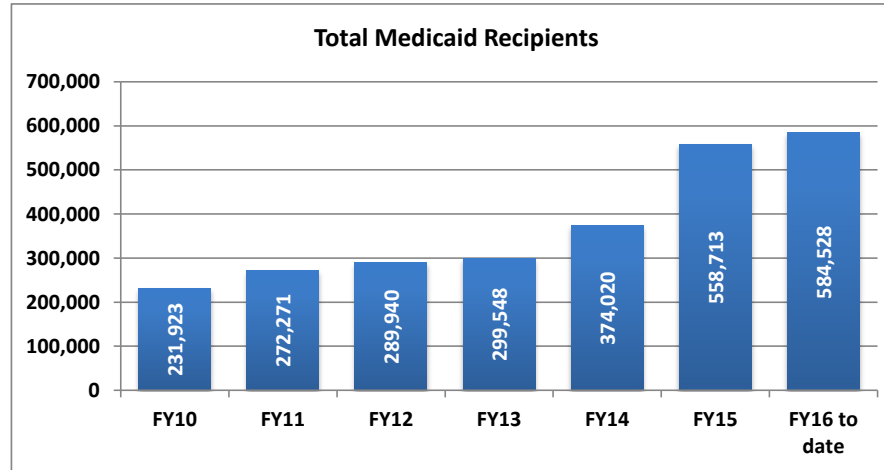


Total Medicaid Recipients

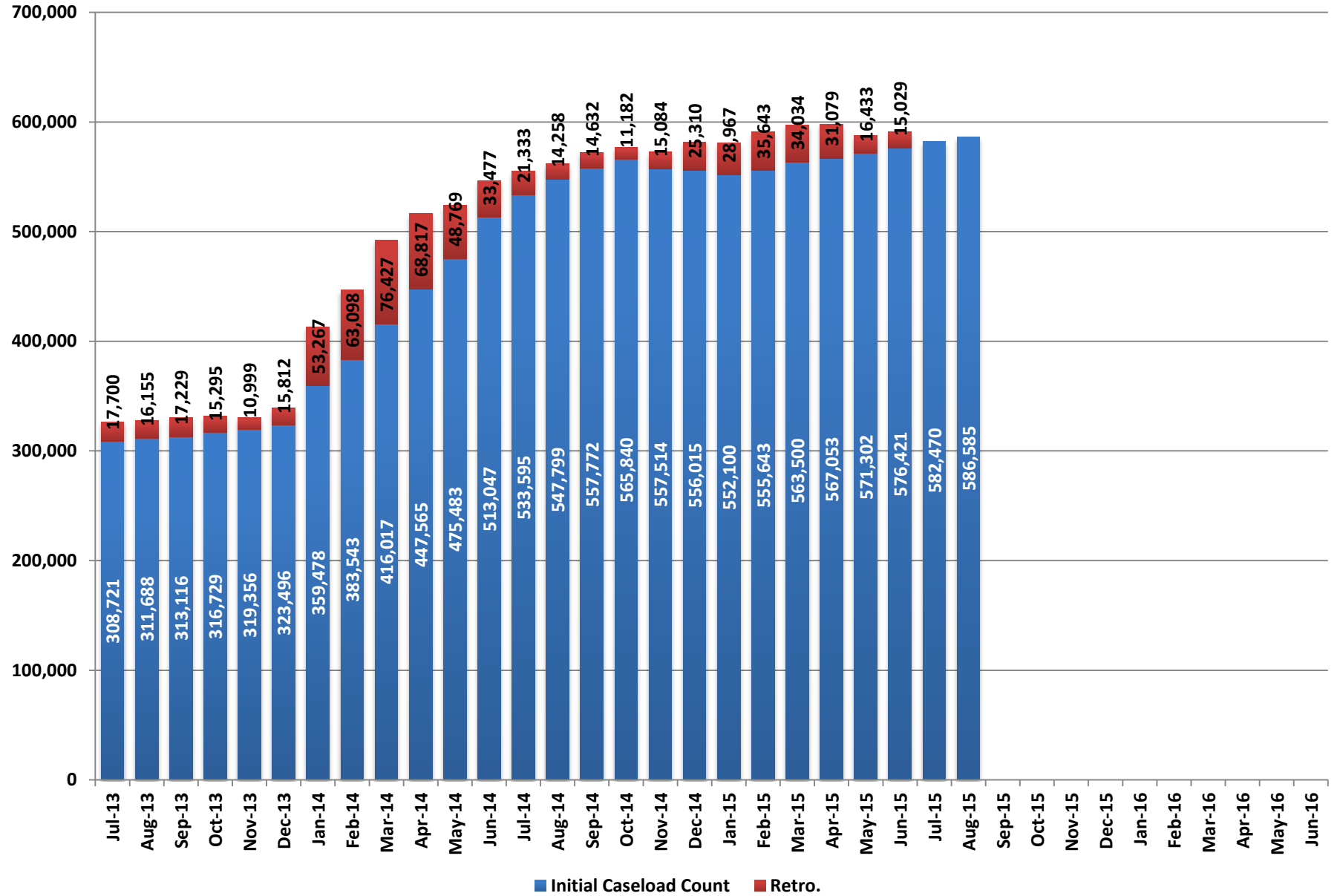
Month	Total Medicaid Recipients	Leg. Approved	June 2015 Projection
Jul-13	308,721	302,133	
Aug-13	311,688	303,108	
Sep-13	313,116	304,125	
Oct-13	316,729	309,289	
Nov-13	319,356	313,966	
Dec-13	323,496	319,296	
Jan-14	359,478	356,572	
Feb-14	383,543	370,719	
Mar-14	416,017	385,155	
Apr-14	447,565	398,982	
May-14	475,483	412,566	
Jun-14	513,047	426,551	
Jul-14	533,595	429,697	
Aug-14	547,799	433,059	
Sep-14	557,772	436,736	
Oct-14	565,840	440,163	
Nov-14	557,514	443,172	
Dec-14	556,015	446,496	
Jan-15	552,100	448,682	
Feb-15	555,643	451,278	
Mar-15	563,500	454,123	
Apr-15	567,053	456,099	
May-15	571,302	458,039	
Jun-15	576,421	460,431	575,683
Jul-15	582,470	577,803	578,984
Aug-15	586,585	579,006	579,814
Sep-15		579,094	578,210
Oct-15		583,229	580,319
Nov-15		584,641	580,845
Dec-15		590,343	585,395
Jan-16		587,111	585,828
Feb-16		586,521	585,459
Mar-16		586,771	588,200
Apr-16		581,029	587,372
May-16		576,122	583,557
Jun-16		571,718	579,319

Fiscal Year Average

Fiscal Year	Total Medicaid Recipients	Percent Change
FY10	231,923	
FY11	272,271	17.4%
FY12	289,940	6.5%
FY13	299,548	3.3%
FY14	374,020	24.9%
FY15	558,713	49.4%
FY16 to date	584,528	4.6%



Total Medicaid - Initial and Retroactive Caseload Counts



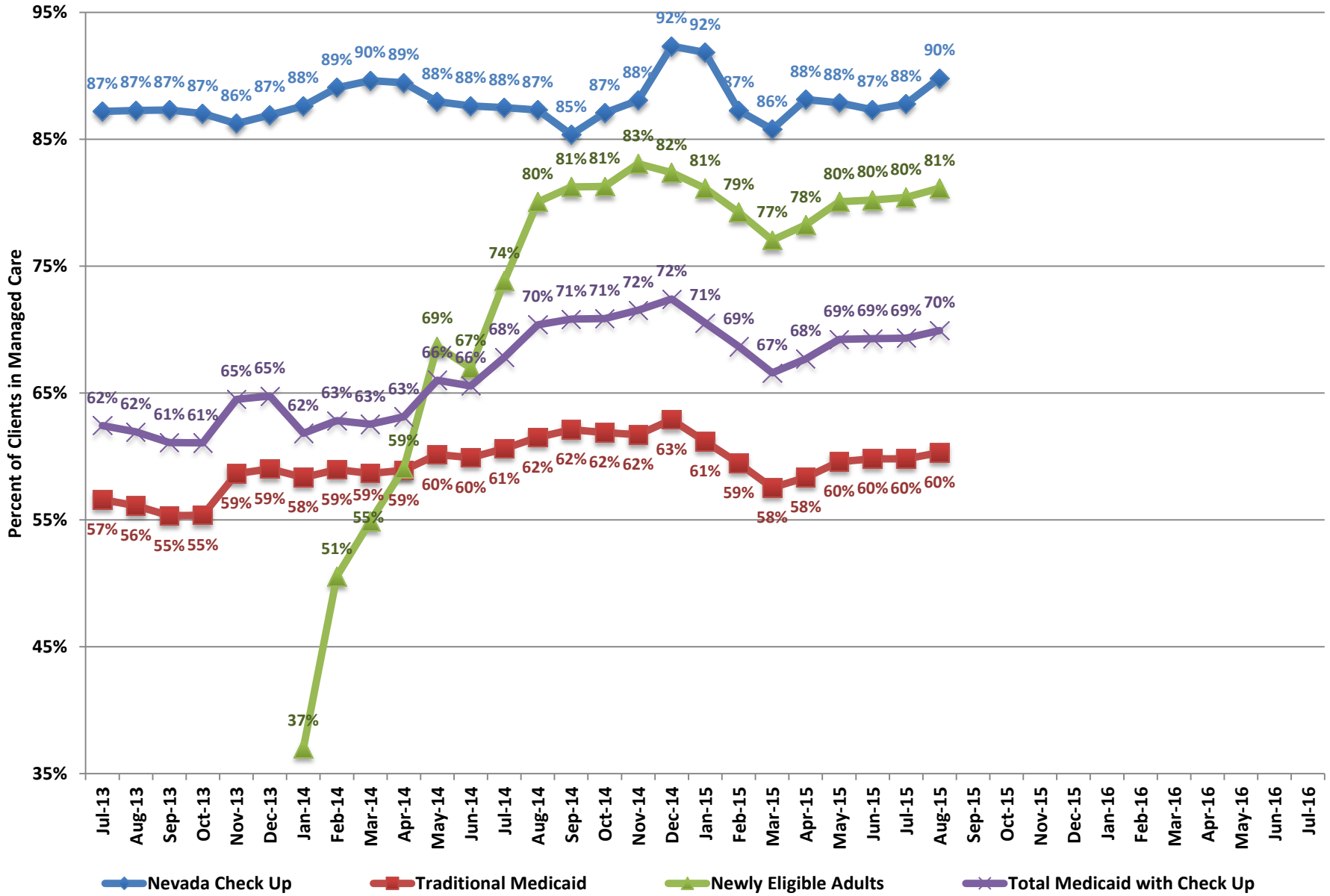
Initial and Retroactive Caseload Counts

	FMC				Aged				Blind and Disabled				Total MAABD				Total Medicaid			
	Initial Caseload Count	Retro.	Caseload with Retro.	% Retro.	Initial Caseload Count	Retro.	Caseload with Retro.	% Retro	Initial Caseload Count	Retro.	Caseload with Retro.	% Retro	Initial Caseload Count	Retro.	Caseload with Retro.	% Retro	Initial Caseload Count	Retro.	Caseload with Retro.	% Retro
Jul-13	223,082	14,299	237,381	6.4%	10,774	282	11,056	2.6%	33,549	1,944	35,493	5.8%	75,114	2,951	78,065	3.9%	308,721	17,700	326,421	5.7%
Aug-13	225,080	13,078	238,158	5.8%	10,792	267	11,059	2.5%	33,675	1,865	35,540	5.5%	75,414	2,636	78,050	3.5%	311,688	16,155	327,843	5.2%
Sep-13	227,559	13,919	241,478	6.1%	10,791	298	11,089	2.8%	33,862	1,958	35,820	5.8%	75,729	2,919	78,648	3.9%	313,116	17,229	330,345	5.5%
Oct-13	228,643	12,047	240,690	5.3%	10,842	324	11,166	3.0%	34,204	1,727	35,931	5.0%	76,302	2,809	79,111	3.7%	316,729	15,295	332,024	4.8%
Nov-13	231,608	8,347	239,955	3.6%	10,921	277	11,198	2.5%	34,390	1,366	35,756	4.0%	76,989	2,340	79,329	3.0%	319,356	10,999	330,355	3.4%
Dec-13	233,404	13,062	246,466	5.6%	10,802	279	11,081	2.6%	34,116	1,347	35,463	3.9%	76,545	2,246	78,791	2.9%	323,496	15,812	339,308	4.9%
Jan-14	237,977	44,327	282,304	18.6%	11,005	344	11,349	3.1%	34,268	1,215	35,483	3.5%	77,549	2,323	79,872	3.0%	359,478	53,267	412,745	14.8%
Feb-14	272,830	56,398	329,228	20.7%	11,054	263	11,317	2.4%	34,689	962	35,651	2.8%	78,555	1,940	80,495	2.5%	383,543	63,098	446,641	16.5%
Mar-14	295,874	67,126	363,000	22.7%	11,168	303	11,471	2.7%	35,253	1,191	36,444	3.4%	79,689	2,276	81,965	2.9%	416,017	76,427	492,444	18.4%
Apr-14	327,115	60,871	387,986	18.6%	11,169	319	11,488	2.9%	35,621	1,079	36,700	3.0%	80,363	2,232	82,595	2.8%	447,565	68,817	516,382	15.4%
May-14	357,994	43,475	401,469	12.1%	11,180	299	11,479	2.7%	35,857	819	36,676	2.3%	80,717	1,813	82,530	2.2%	475,483	48,769	524,252	10.3%
Jun-14	385,544	28,625	414,169	7.4%	11,187	307	11,494	2.7%	36,065	772	36,837	2.1%	81,060	1,991	83,051	2.5%	513,047	33,477	546,524	6.5%
Jul-14	422,738	18,043	440,781	4.3%	11,316	329	11,645	2.9%	36,472	800	37,272	2.2%	82,165	2,281	84,446	2.8%	533,595	21,333	554,928	4.0%
Aug-14	442,154	11,865	454,019	2.7%	11,403	292	11,695	2.6%	36,885	585	37,470	1.6%	83,348	1,856	85,204	2.2%	547,799	14,258	562,057	2.6%
Sep-14	455,137	12,622	467,759	2.8%	11,492	271	11,763	2.4%	37,150	556	37,706	1.5%	84,269	1,576	85,845	1.9%	557,772	14,632	572,404	2.6%
Oct-14	464,121	9,556	473,677	2.1%	11,563	221	11,784	1.9%	37,574	433	38,007	1.2%	85,296	1,346	86,642	1.6%	565,840	11,182	577,022	2.0%
Nov-14	471,105	14,143	485,248	3.0%	11,601	157	11,758	1.4%	37,520	367	37,887	1.0%	85,552	1,090	86,642	1.3%	557,514	15,084	572,598	2.7%
Dec-14	462,482	23,649	486,131	5.1%	11,628	184	11,812	1.6%	37,387	508	37,895	1.4%	84,697	1,488	86,185	1.8%	556,015	25,310	581,325	4.6%
Jan-15	461,718	27,632	489,350	6.0%	11,649	193	11,842	1.7%	37,585	499	38,084	1.3%	85,193	1,369	86,562	1.6%	552,100	28,967	581,067	5.2%
Feb-15	457,310	33,937	491,247	7.4%	11,666	150	11,816	1.3%	37,725	496	38,221	1.3%	85,921	1,311	87,232	1.5%	555,643	35,643	591,286	6.4%
Mar-15	460,123	31,985	492,108	7.0%	11,719	165	11,884	1.4%	37,923	516	38,439	1.4%	86,684	1,381	88,065	1.6%	563,500	34,034	597,534	6.0%
Apr-15	467,055	29,198	496,253	6.3%	11,764	186	11,950	1.6%	38,177	529	38,706	1.4%	87,281	1,505	88,786	1.7%	567,053	31,079	598,132	5.5%
May-15	469,884	15,272	485,156	3.3%	11,793	109	11,902	0.9%	38,356	328	38,684	0.9%	87,812	874	88,686	1.0%	571,302	16,433	587,735	2.9%
Jun-15	473,464	13,937	487,401	2.9%	11,878	113	11,991	1.0%	38,710	346	39,056	0.9%	88,804	841	89,645	0.9%	576,421	15,029	591,450	2.6%
Jul-15	477,532				11,922				38,752				89,091				582,470			
Aug-15	483,253				11,981				38,940				89,384				586,585			
Sep-15																				
Oct-15																				
Nov-15																				
Dec-15																				
Jan-16																				
Feb-16																				
Mar-16																				
Apr-16																				
May-16																				
Jun-16																				

Fiscal Year Averages

Fiscal Year	FMC				Aged				Blind and Disabled				Total MAABD				Total Medicaid			
	Initial Caseload Count	Retro.	Caseload with Retro.	% Retro.	Initial Caseload Count	Retro.	Caseload with Retro.	% Retro	Initial Caseload Count	Retro.	Caseload with Retro.	% Retro	Initial Caseload Count	Retro.	Caseload with Retro.	% Retro	Initial Caseload Count	Retro.	Caseload with Retro.	% Retro
FY14	270,559	31,298	301,857	11.1%	10,974	297	11,271	2.7%	34,629	1,354	35,983	3.9%	77,836	2,373	80,208	3.1%	374,020	36,420	410,440	9.3%
FY15	458,941	20,153	479,094	4.4%	11,623	197	11,820	1.7%	37,622	497	38,119	1.3%	85,585	1,410	86,995	1.7%	558,713	21,915	580,628	3.9%
FY16 to date	480,393				11,952				38,846				89,238				584,528			

Percent in Managed Care by Client Type



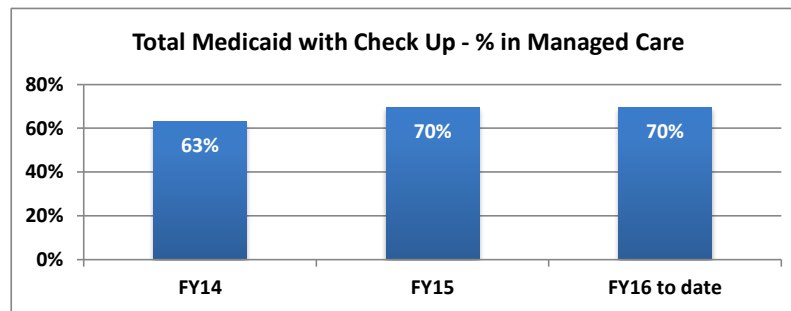
Managed Care Enrollment

Month	Nevada Check Up			Traditional Medicaid			Newly Eligible Adults			Total Medicaid with Check Up		
	Managed Care Enrollment	Total Caseload	% in Managed Care	Managed Care Enrollment	Total Caseload net of SLMB	% in Managed Care	Managed Care Enrollment	Total Caseload	% in Managed Care	Managed Care Enrollment	Total Caseload net of SLMB	% in Managed Care
Jul-14	21,056	24,062	88%	246,697	406,981	61%	102,004	138,162	74%	369,757	545,143	68%
Aug-14	22,749	26,057	87%	255,444	415,316	62%	116,710	145,761	80%	394,903	561,077	70%
Sep-14	20,727	24,276	85%	259,459	417,735	62%	122,941	151,308	81%	403,127	569,043	71%
Oct-14	21,526	24,717	87%	260,195	420,486	62%	127,480	156,835	81%	409,201	577,321	71%
Nov-14	21,662	24,597	88%	252,144	408,586	62%	133,092	160,205	83%	406,898	568,791	72%
Dec-14	21,798	23,604	92%	252,731	401,767	63%	135,852	164,906	82%	410,381	566,673	72%
Jan-15	19,078	20,770	92%	240,793	393,454	61%	134,994	166,393	81%	394,865	559,847	71%
Feb-15	17,980	20,601	87%	233,076	391,982	59%	135,531	171,041	79%	386,587	563,023	69%
Mar-15	17,146	19,987	86%	226,252	393,206	58%	136,242	176,834	77%	379,640	570,040	67%
Apr-15	17,813	20,210	88%	229,849	393,935	58%	140,674	179,759	78%	388,336	573,694	68%
May-15	18,718	21,300	88%	237,126	397,890	60%	144,971	181,051	80%	400,815	578,941	69%
Jun-15	18,420	21,090	87%	240,952	402,799	60%	145,036	180,817	80%	404,408	583,616	69%
Jul-15	18,516	21,090	88%	243,673	407,403	60%	146,559	182,223	80%	408,748	589,626	69%
Aug-15	18,859	20,995	90%	247,172	409,905	60%	149,111	183,742	81%	415,142	593,647	70%
Sep-15	18,307			251,157			152,262			421,726		
Oct-15												
Nov-15												
Dec-15												
Jan-16												
Feb-16												
Mar-16												
Apr-16												
May-16												
Jun-16												
Jul-16												

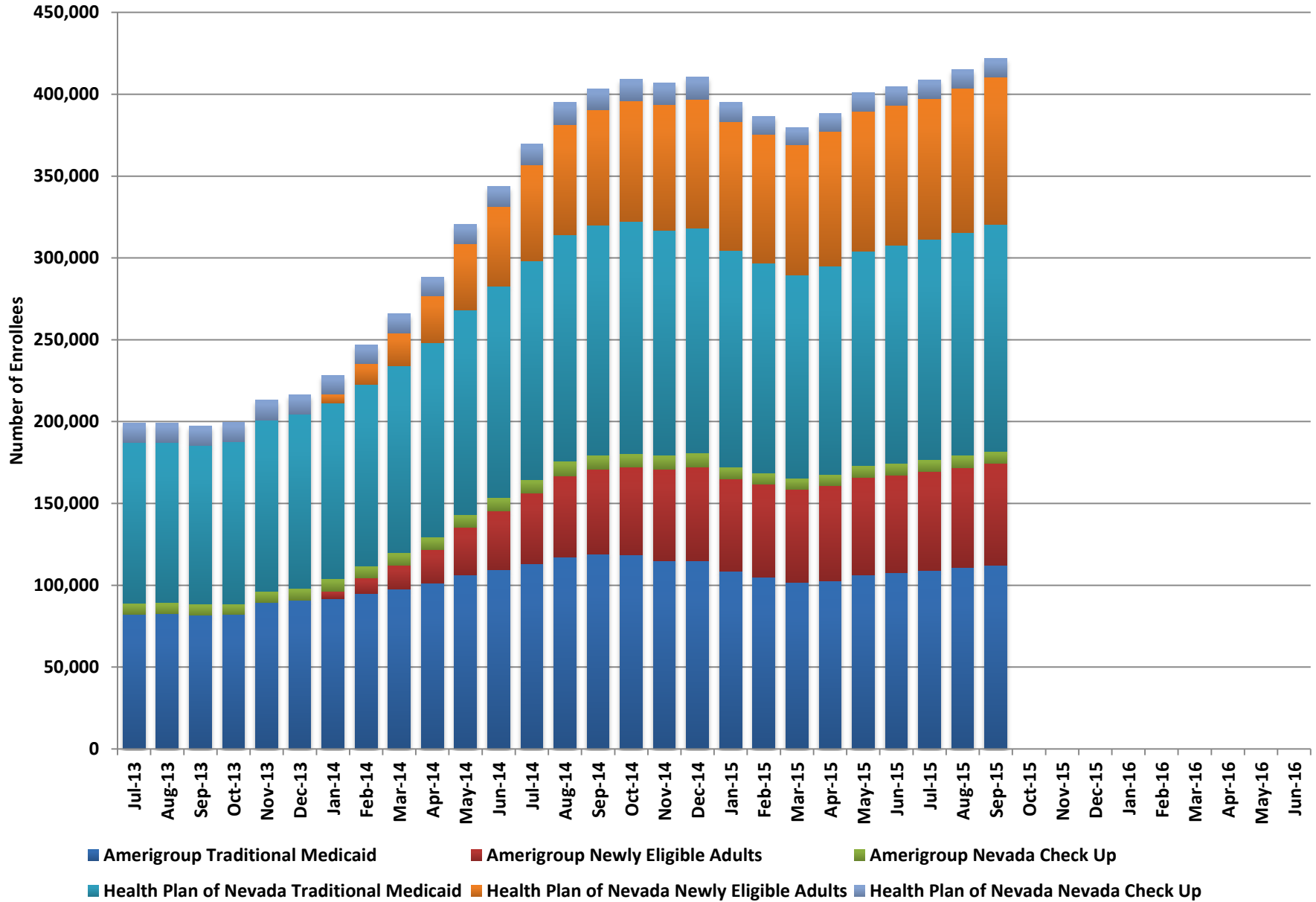
Note: Traditional Medicaid totals include both cat 11 (CHIP Expansion), and cat 12 (TANF/CHAP) populations.

Total Medicaid with Check Up Fiscal Year Averages

	Managed Care Enrollment	% in Managed Care
FY14	243,142	63%
FY15	395,743	70%
FY16 to date	415,205	70%



Managed Care Enrollment by Plan and Client Type



Managed Care Enrollment by Plan and Client Type

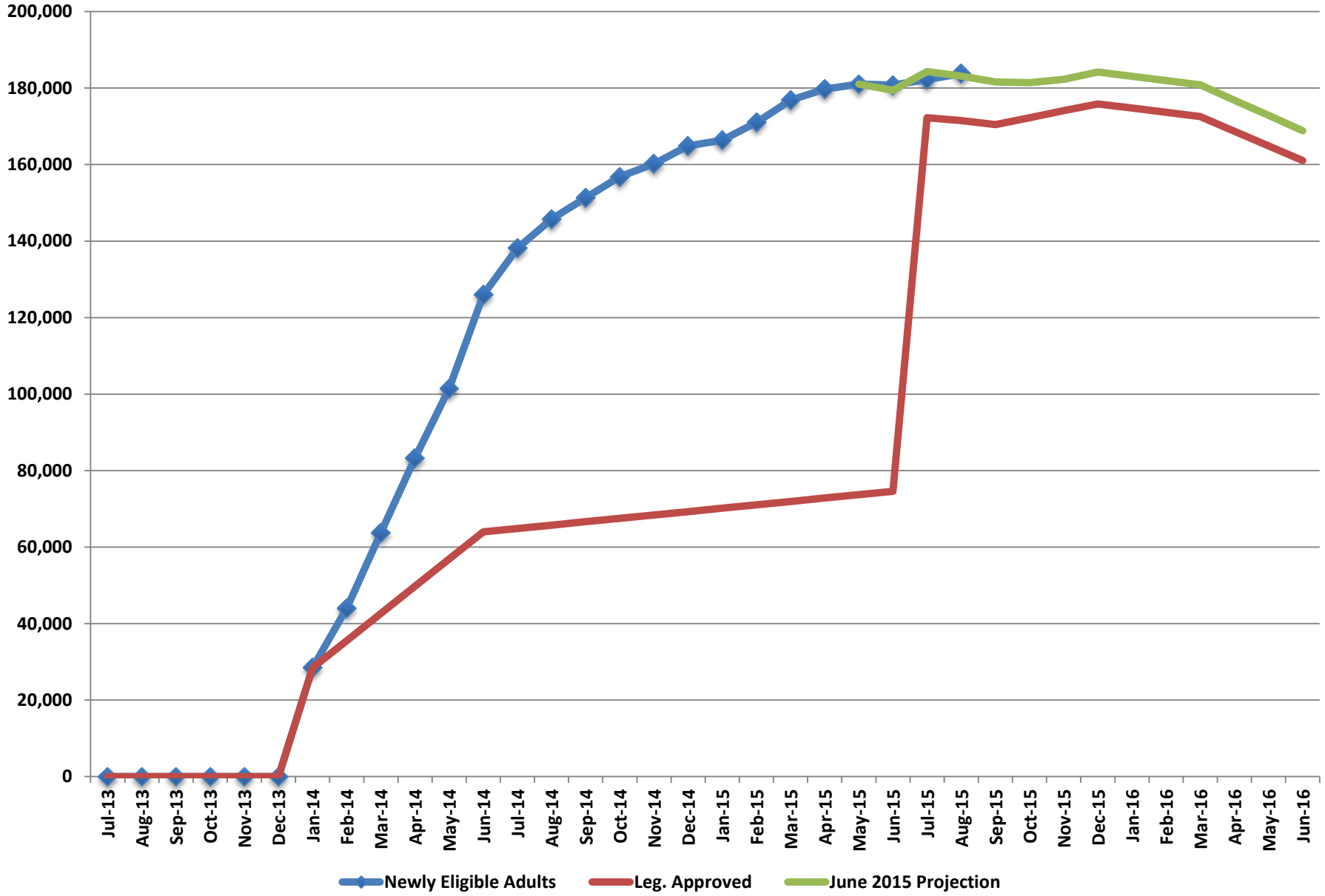
Month	Amerigroup								Health Plan of Nevada								Total Managed Care Enrollment
	Traditional Medicaid	% of Traditional Medicaid	Newly Eligible Adults	% of Newly Eligible	Nevada Check Up	% of Nevada Check Up	Total for Plan	% of Total	Traditional Medicaid	% of Traditional Medicaid	Newly Eligible Adults	% of Newly Eligible	Nevada Check Up	% of Nevada Check Up	Total for Plan	% of Total	
Jul-14	113,152	46%	43,213	42%	8,358	40%	164,723	45%	133,545	54%	58,791	58%	12,698	60%	205,034	55%	369,757
Aug-14	117,126	46%	49,565	42%	9,101	40%	175,792	45%	138,318	54%	67,145	58%	13,648	60%	219,111	55%	394,903
Sep-14	118,938	46%	52,175	42%	8,205	40%	179,318	44%	140,521	54%	70,766	58%	12,522	60%	223,809	56%	403,127
Oct-14	118,400	46%	53,694	42%	8,229	38%	180,323	44%	141,795	54%	73,786	58%	13,297	62%	228,878	56%	409,201
Nov-14	114,862	46%	56,132	42%	8,357	39%	179,351	44%	137,282	54%	76,960	58%	13,305	61%	227,547	56%	406,898
Dec-14	115,024	46%	57,181	42%	8,514	39%	180,719	44%	137,707	54%	78,671	58%	13,284	61%	229,662	56%	410,381
Jan-15	108,592	45%	56,467	42%	7,310	38%	172,369	44%	132,201	55%	78,527	58%	11,768	62%	222,496	56%	394,865
Feb-15	105,039	45%	56,648	42%	6,902	38%	168,589	44%	128,037	55%	78,883	58%	11,078	62%	217,998	56%	386,587
Mar-15	101,853	45%	56,757	42%	6,601	38%	165,211	44%	124,399	55%	79,485	58%	10,545	62%	214,429	56%	379,640
Apr-15	102,822	45%	58,261	41%	6,834	38%	167,917	43%	127,027	55%	82,413	59%	10,979	62%	220,419	57%	388,336
May-15	106,202	45%	59,826	41%	7,284	39%	173,312	43%	130,924	55%	85,145	59%	11,434	61%	227,503	57%	400,815
Jun-15	107,816	45%	59,627	41%	7,231	39%	174,674	43%	133,136	55%	85,409	59%	11,189	61%	229,734	57%	404,408
Jul-15	109,200	45%	60,248	41%	7,292	39%	176,740	43%	134,473	55%	86,311	59%	11,224	61%	232,008	57%	408,748
Aug-15	110,797	45%	61,059	41%	7,481	40%	179,337	43%	136,375	55%	88,052	59%	11,378	60%	235,805	57%	415,142
Sep-15	112,302	45%	62,091	41%	7,318	40%	181,711	43%	138,855	55%	90,171	59%	10,989	60%	240,015	57%	421,726
Oct-15																	
Nov-15																	
Dec-15																	
Jan-16																	
Feb-16																	
Mar-16																	
Apr-16																	
May-16																	
Jun-16																	

Note: Traditional Medicaid totals include both cat 11 (CHIP Expansion), and cat 12 (TANF/CHAP) populations.

Fiscal Year Averages

Fiscal Year	Amerigroup								Health Plan of Nevada							
	Traditional Medicaid	% of Traditional Medicaid	Newly Eligible Adults	% of Newly Eligible	Nevada Check Up	% of Nevada Check Up	Total for Plan	% of Total	Traditional Medicaid	% of Traditional Medicaid	Newly Eligible Adults	% of Newly Eligible	Nevada Check Up	% of Nevada Check Up	Total for Plan	% of Total
FY14	92,468	46%	19,115	43%	7,348	38%	109,373	45%	109,038	54%	25,929	57%	11,760	62%	133,762	55%
FY15	110,819	45%	54,962	42%	7,744	39%	173,525	44%	133,741	55%	76,332	58%	12,146	61%	222,218	56%
FY16 to date	110,766	45%	61,133	41%	7,364	40%	179,263	43%	136,568	55%	88,178	59%	11,197	60%	235,943	57%

Newly Eligible Adults

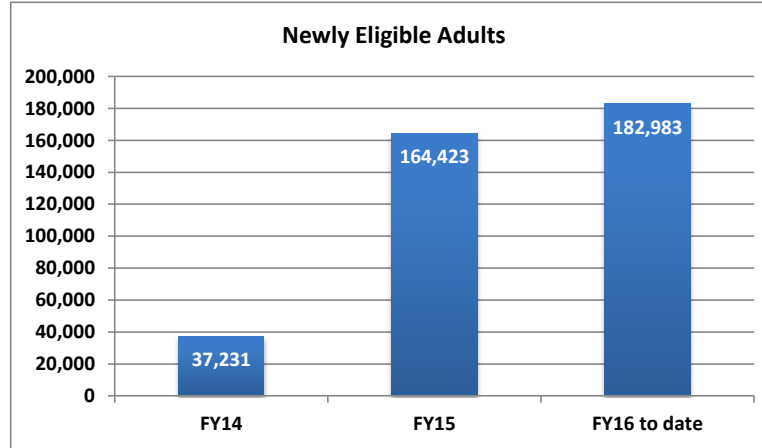


Newly Eligible Adults (100% FMAP)

Month	Newly Eligible Adults	Leg. Approved	June 2015 Projection
Jul-13		0	
Aug-13		0	
Sep-13		0	
Oct-13		0	
Nov-13		0	
Dec-13		0	
Jan-14	28,435	28,429	
Feb-14	44,012	35,536	
Mar-14	63,731	42,643	
Apr-14	83,216	49,750	
May-14	101,384	56,858	
Jun-14	125,989	63,965	
Jul-14	138,162	64,849	
Aug-14	145,761	65,733	
Sep-14	151,308	66,617	
Oct-14	156,835	67,501	
Nov-14	160,205	68,386	
Dec-14	164,906	69,270	
Jan-15	166,393	70,154	
Feb-15	171,041	71,038	
Mar-15	176,834	71,922	
Apr-15	179,759	72,806	
May-15	181,051	73,690	
Jun-15	180,817	74,574	179,418
Jul-15	182,223	172,250	184,322
Aug-15	183,742	171,482	183,162
Sep-15		170,437	181,623
Oct-15		172,267	181,443
Nov-15		174,080	182,300
Dec-15		175,874	184,214
Jan-16		174,775	183,100
Feb-16		173,677	181,986
Mar-16		172,578	180,872
Apr-16		168,711	176,855
May-16		164,862	172,857
Jun-16		161,032	168,877

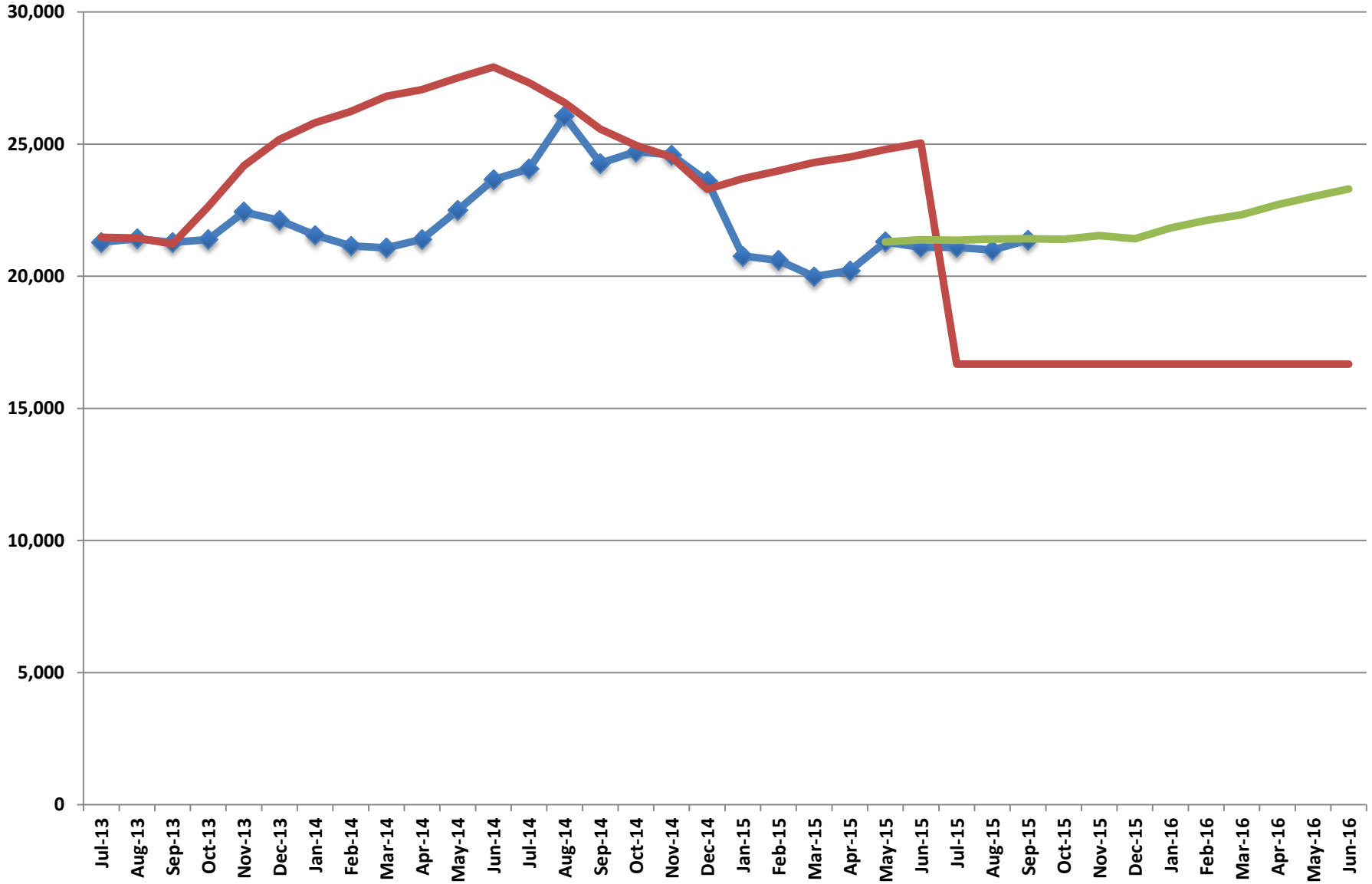
Fiscal Year Average

Fiscal Year	Newly Eligible Adults	Percent Change
FY14	37,231	
FY15	164,423	341.6%
FY16 to date	182,983	11.3%



Note: This caseload includes childless adults age 19-64 between 0%-138% FPL and parents age 19-64 between 23%-138% FPL.

Nevada Check Up



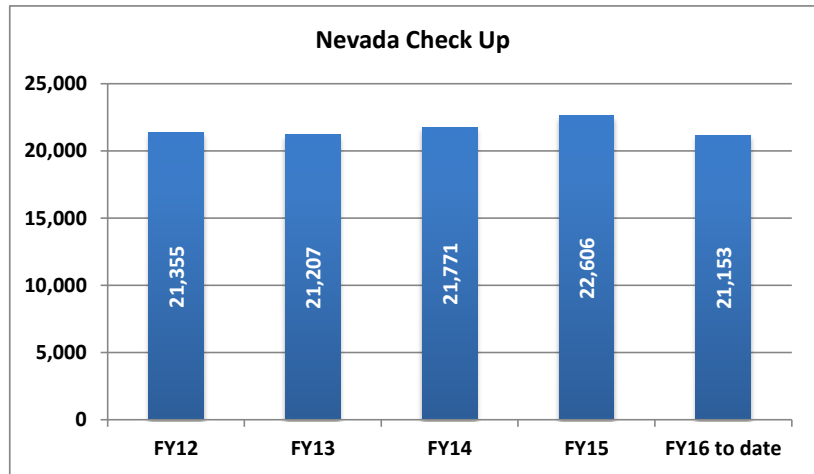
◆ Nevada Check Up — Leg. Approved — June 2015 Projection

Nevada Check Up

Month	Nevada Check Up	Leg. Approved	June 2015 Projection
Jul-13	21,287	21,470	
Aug-13	21,415	21,447	
Sep-13	21,275	21,225	
Oct-13	21,392	22,636	
Nov-13	22,430	24,181	
Dec-13	22,116	25,181	
Jan-14	21,561	25,807	
Feb-14	21,152	26,240	
Mar-14	21,072	26,810	
Apr-14	21,398	27,065	
May-14	22,495	27,513	
Jun-14	23,655	27,921	
Jul-14	24,062	27,320	
Aug-14	26,057	26,575	
Sep-14	24,276	25,566	
Oct-14	24,717	24,960	
Nov-14	24,597	24,511	
Dec-14	23,604	23,297	
Jan-15	20,770	23,694	
Feb-15	20,601	23,988	
Mar-15	19,987	24,302	
Apr-15	20,210	24,506	
May-15	21,300	24,799	
Jun-15	21,090	25,039	21,382
Jul-15	21,090	16,672	21,360
Aug-15	20,995	16,672	21,405
Sep-15	21,373	16,672	21,417
Oct-15		16,672	21,396
Nov-15		16,672	21,539
Dec-15		16,672	21,419
Jan-16		16,672	21,831
Feb-16		16,672	22,111
Mar-16		16,672	22,326
Apr-16		16,672	22,705
May-16		16,672	23,018
Jun-16		16,672	23,299

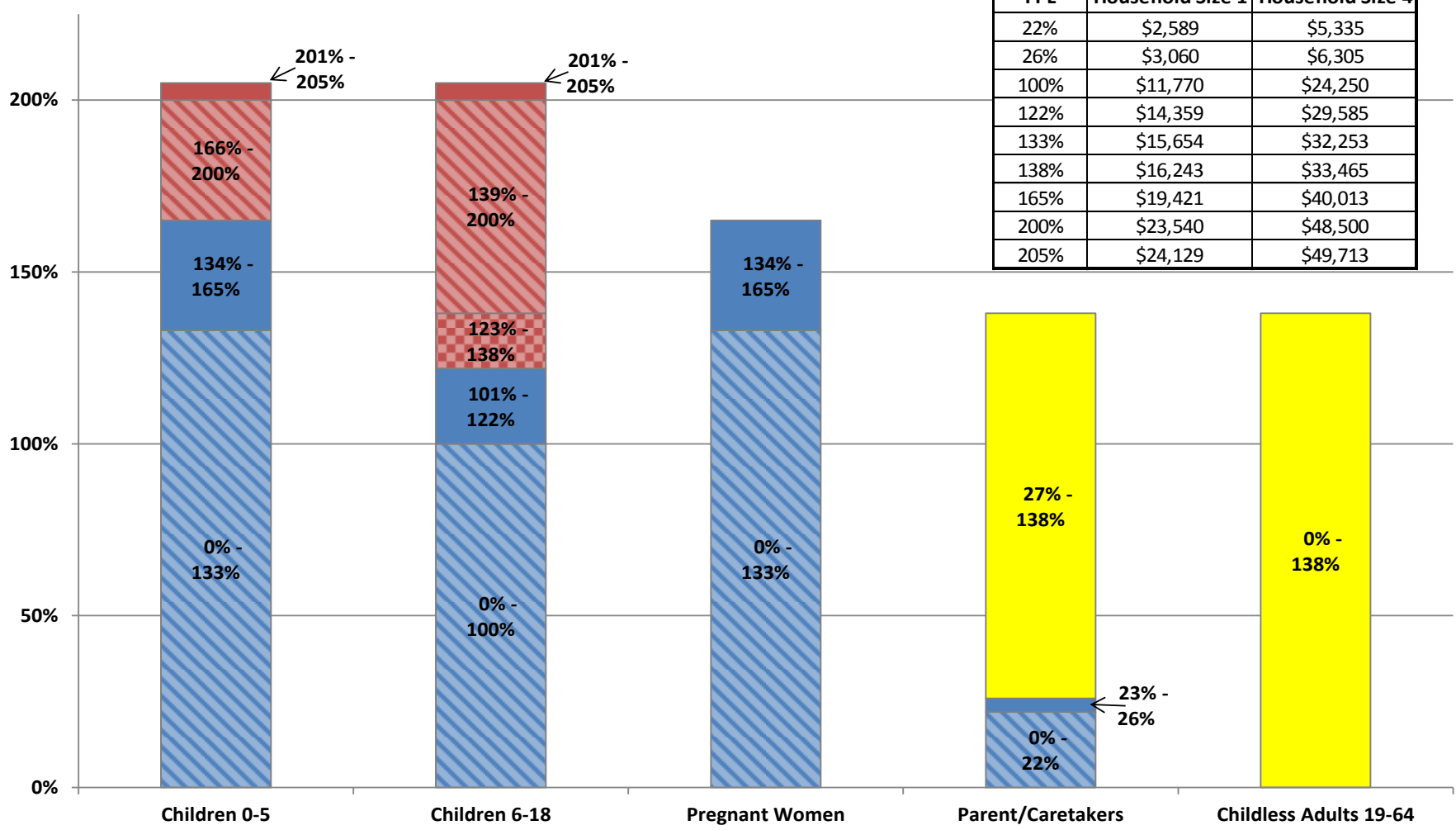
Fiscal Year Average

Fiscal Year	Nevada Check Up	Percent Change
FY12	21,355	
FY13	21,207	-0.7%
FY14	21,771	2.7%
FY15	22,606	3.8%
FY16 to date	21,153	-6.4%



Medicaid Eligibility and FMAP

2015 Federal Poverty Guidelines		
FPL	Household Size 1	Household Size 4
22%	\$2,589	\$5,335
26%	\$3,060	\$6,305
100%	\$11,770	\$24,250
122%	\$14,359	\$29,585
133%	\$15,654	\$32,253
138%	\$16,243	\$33,465
165%	\$19,421	\$40,013
200%	\$23,540	\$48,500
205%	\$24,129	\$49,713



- Old Eligibility Standard, Regular FMAP
- New Eligibility Standard, Regular FMAP
- Old Eligibility Standard, CHIP FMAP
- New Eligibility Standard, CHIP FMAP
- New Eligibility Standard, 100% FMAP

Blended FMAP

Updated March 2015

State Fiscal Year	FMAP	Enhanced (CHIP) FMAP	ACA Enhanced (CHIP) FMAP	New Eligibles FMAP
FY03	51.79%	66.25%		
	52.53%	66.77%		
FY04	54.30%	68.01%		
	55.34%	68.74%		
FY05	55.66%	68.96%		
FY06	55.05%	68.53%		
FY07	54.14%	67.90%		
FY08	52.96%	67.07%		
FY09	50.66%	65.46%		
	61.11%	72.78%		
FY10	50.12%	65.08%		
	63.93%	74.75%		
FY11	51.25%	65.87%		
	62.05%	70.44%		
FY12	55.05%	68.54%		
FY13	58.86%	71.20%		
FY14	62.26%	73.58%		100.00%
FY15	64.04%	74.83%		100.00%
FY16	64.79%	75.35%	92.60%	100.00%
FY17	65.25%	75.68%	98.68%	97.50%
FY18	65.68%	75.98%	98.98%	94.50%
FY19	65.77%	76.04%	99.04%	93.50%
FY20	65.54%	75.87%	81.62%	91.50%

NOTE: The green cells reflect a 2.95% increase for the period April 2003 through June 2004. The blue cells reflect the ARRA stimulus adjusted FMAP for October 2008 through December 2010. The FMAP values for FY18 through FY20 are projections.